

NEW CONCOURSE



Key Facts

Notice to Proceed: January 2017

Contractors:

Design: AIR Alliance (AECOM & PGAL Joint Venture)

Construction: Turner Construction Company

Background

Record-breaking passenger growth at Reagan National Airport led to the utilization of 14 remote aircraft parking slots, creating a growing customer concern with the use of Gate 35X. About 6,000 passengers a day wait in cramped hold rooms and stand in buses to reach their aircraft. Building a new concourse opens new opportunities for the Airports Authority to make passenger-focused improvements throughout the new space.

Construction of the new 14-gate concourse began in 2017 with the demolition of aircraft hangars and the Airports Authority office building to make way for a buildout of an enclosed concourse and a 378,000-square foot aircraft apron.

Passenger Benefits

When construction is completed, the new concourse will replace the outdoor gates currently serviced by buses from Gate 35X. It will provide regional travelers with direct access to planes via jet bridges, spacious waiting and boarding areas, diverse seating options and new concessions. The concourse design includes architectural features consistent with Terminal B/C's exposed steel structure, glass walls and domed ceilings while maximizing open, navigable gate areas and panoramic views of downtown Washington, D.C.

In addition to increasing passenger comfort and convenience, the new concourse will have upper-level space for a new 14,000-square-foot American Airlines Admirals Club with views of Washington, D.C.

See following pages for additional FACTS about the New Concourse and Aircraft Apron.

FACTS – NEW CONCOURSE

Three Levels:

Operation
Concourse
Club

Total Building Square Footage:	230,000 square feet
Dome Structures:	6
Gates/Holdrooms:	14
Seating:	850 seats
Elevators:	4
Moving Walkways:	4
Stairwells:	7
Flight Information Displays:	6
Emergency Exit Doors:	5
Concessions:	About 14,000 square feet
Public Restrooms:	4
Companion Restrooms	2
Mother Care Rooms:	2
Service Animal Relief Area:	1 (indoor)
Electric Charging Stations:	70 (to be installed by American Airlines)
Airline Baggage Handling System:	1,290 linear feet

What It Takes:

Steel (Structural):	2,000 tons
Piles:	239 poured and 440 precast
Concrete:	7,500 cubic yards
Metal Panel:	21,800 square feet
Glass:	82,477 square feet
Flooring (Terrazzo):	45,750 square feet
Flooring (Carpet):	32,600 square feet
Number of subcontractors:	72

FACTS – AIRCRAFT APRON

Area:	378,000 square feet
Construction Phases:	7
Aircraft parking positions	14 at gates, 2 overnight hardstands
Hardstands Maintained In Construction:	11-12
Aircraft Refueling Hydrants:	23

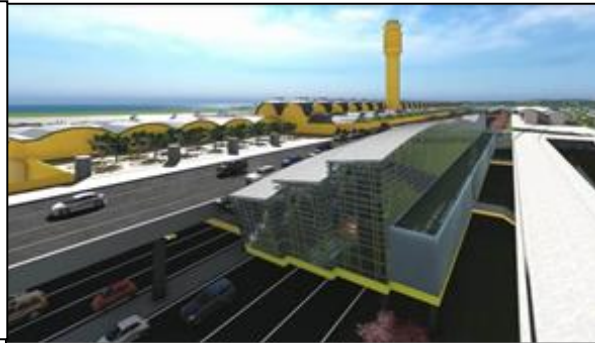
What It Takes:

Concrete:	22,000 cubic yards
Asphalt:	15,000 tons
Surcharge Materials:	28,000 cubic yards
Security Fencing:	1,100 linear feet
Storm Drain Piping:	5,100 linear feet
Number of subcontractors:	9

Sign up for construction alerts at
[FlyReagan.com/ProjectJourney](https://flyreagan.com/ProjectJourney)



Follow @Reagan_Airport
on Twitter



Transforming the Passenger Experience

Reagan National's facilities were previously designed to serve 15 million passengers per year. But more than 23 million passengers traveled through the airport annually, setting new records and straining the existing infrastructure. In response, the airport launched Project Journey, a \$1 billion investment to transform the traveler experience inside terminals, at the gates and along the roads. The end result will provide passengers with greater connectivity, more shopping and dining choices and a more pleasant post-security environment.