

DCA Runway 19 Chartered Visual Pre/Post Dec. 10

By: **Ed Donaldson**, Capital District Manager
(Acting)
Bennie Hutto, VP, PCT NATCA

Date: December 10, 2015



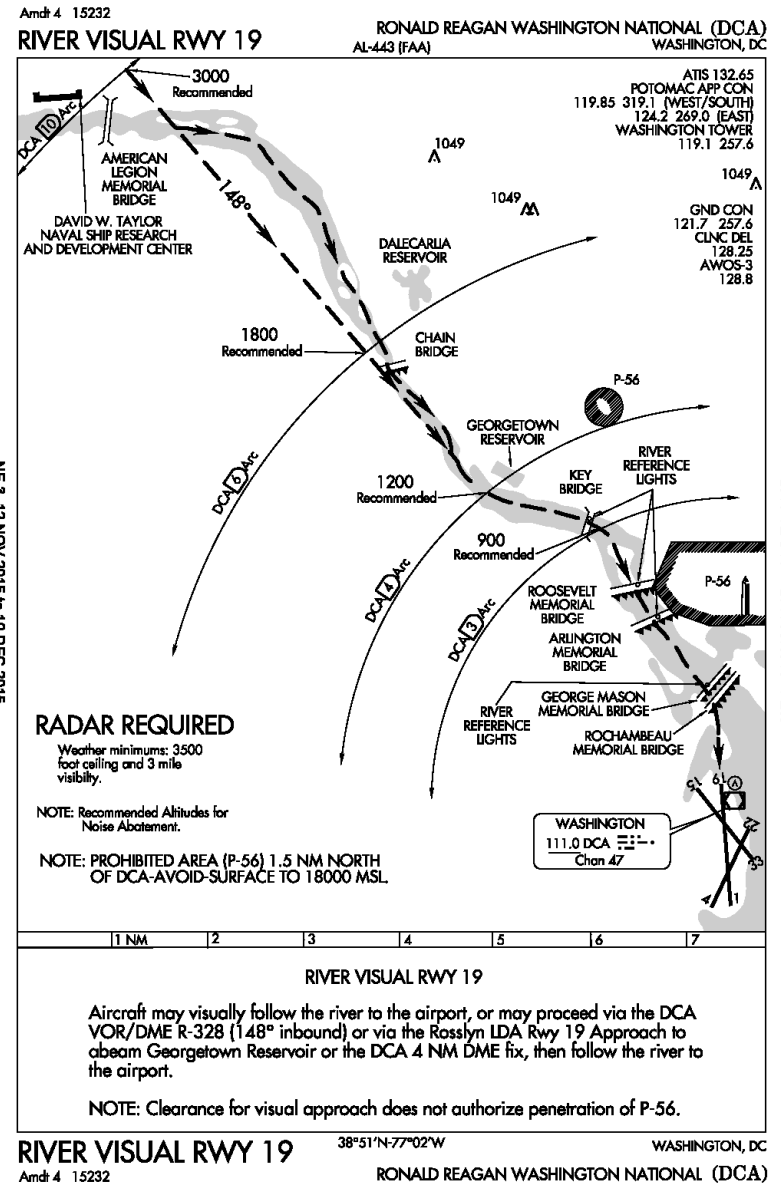
Federal Aviation
Administration



Federal Aviation
Administration

RIVER VISUAL RWY 19

- 1) Aircraft may visually follow the river to the airport.
- 2) Aircraft may proceed via the 148 radial inbound to the DCA VOR/DME
- 3) Aircraft may fly the LDA Y RWY 19 approach to a point abeam the Georgetown Reservoir OR the DCA 4 NM DME fix



RIVER VISUAL RWY 19

Chart Date 12/10/2015

- 1) Aircraft may visually follow the river to the airport or...
- 2) **NEW:** Aircraft may proceed via the RNAV (RNP) RWY 19 approach to SETOC then follow the river to the airport

Note: Option to fly the 148 radial inbound to the DCA VOR/DME and the option to fly the LDA Y are both removed.

NOTE: Recommended altitude abeam the Georgetown Reservoir increased from 1200 feet to 1500 feet.

